

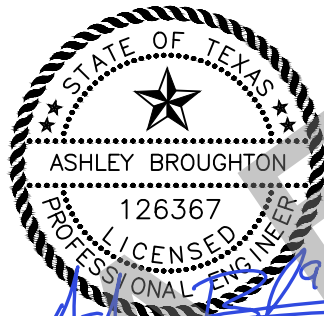
BID TABULATION FOR:

CONSTRUCTION OF THE WILDTREE WASTEWATER TREATMENT PLANT (0.15 MGD) - PHASE 1 TO SERVE MONTGOMERY-GRIMES COUNTIES MUNICIPAL
UTILITY DISTRICT NO. 146B
MONTGOMERY-GRIMES COUNTIES MUNICIPAL UTILITY DISTRICT NO. 146B
MONTGOMERY COUNTY, TEXAS
SEPTEMBER 03, 2025
LJA ENGINEERING, INC.
F. LEMUS
SEPTEMBER 04, 2025
4021-3002 (9.2)

BID OPENING DATE:**BID OPENING LOCATION:****TABULATION BY:****TABULATION DATE:****LJA JOB NO.**

BIDDER NAME	BASE BID AMOUNT	ALTERNATE 1 NET AMT (\$)	ALTERNATE 2 NET AMT (\$)	ALTERNATE 3 NET AMT (\$)
1) HCG	\$1,198,156.00	\$2,032,214.90	\$115,794.25	\$146,160.00
2) PIONEER CONSTRUCTION SERVICES, LLC	\$1,280,253.00	\$2,340,000.00	\$130,429.00	\$191,400.00
3) GILLELAND SMITH CONSTRUCTION, INC.	\$1,290,226.00	\$1,909,000.00	\$92,430.00	\$191,400.00

CALENDAR DAYS 240/270



I, Ashley Broughton, PE, hereby certify these bid tabulations to be true and correct.

BID TABULATION FOR:

CONSTRUCTION OF THE WILDTREE WASTEWATER TREATMENT PLANT (0.15 MGD) - PHASE 1 TO SERVE MONTGOMERY-GRIMES COUNTIES MUNICIPAL UTILITY DISTRICT NO. 146B

BID OPENING DATE:
BID OPENING LOCATION:
TABULATION BY:
TABULATION DATE:
LJA JOB NO.

MONTGOMERY-GRIMES COUNTIES MUNICIPAL UTILITY DISTRICT NO. 146E
MONTGOMERY COUNTY, TEXAS
SEPTEMBER 03, 2025
LJA ENGINEERING, INC.
F. LEMUS
SEPTEMBER 04, 2025
4021-3002 (9.2)

				1) HCG		2) PIONEER CONSTRUCTION SERVICES, LLC		3) GILLELAND SMITH CONSTRUCTION, INC.	
NO.	ITEM DESCRIPTION	UNIT	QTY	UNIT COST	TOTAL	UNIT COST	TOTAL	UNIT COST	TOTAL
BASE BID WWTP BASE BID ITEMS									
1.	SITE WORK INCLUDING BUT NOT LIMITED TO SITE GRADING AND HYDROMULCH SEEDING, DRAINAGE, CONCRETE SIDEWALK, AND ALL REQUIRED APPURTENANCES, AS SHOWN ON PLANS, COMPLETE IN PLACE	LS	1	\$175,000.00	\$175,000.00	\$10,000.00	\$10,000.00	\$310,000.00	\$310,000.00
2.	COORDINATION WITH EQUIPMENT PROVIDERS FOR INSTALLATION OF LEASED EQUIPMENT AND ALL ITEMS NOT PROVIDED BY EQUIPMENT PROVIDERS AS DESCRIBED IN EQUIPMENT PROVIDERS SCOPE OF SERVICES AND NOT COVERED IN SEPARATE BID ITEM (SEE EXHIBIT A, INCLUDED AFTER BID FORM) FOR A COMPLETE AND OPERATIONAL WWTP, COMPLETE IN PLACE	LS	1	\$1.00	\$1.00	\$110,000.00	\$110,000.00	\$1,000.00	\$1,000.00
3.	CRUSHED CONCRETE FOUNDATION FOR TREATMENT UNITS AND EQUIPMENT, INCLUDING FOUNDATION, COMPLETE IN PLACE	LS	1	\$60,000.00	\$60,000.00	\$242,000.00	\$242,000.00	\$130,000.00	\$130,000.00
4.	8-FOOT TALL CHAINLINK FENCE INCLUDING 18-FOOT DOUBLE SWING WOOD GATE AS SHOWN ON PLANS, COMPLETE IN PLACE.	LF	1027	\$54.00	\$55,458.00	\$45.00	\$46,215.00	\$70.00	\$71,890.00
5.	6" THICK CRUSHED CONCRETE ACCESS ROAD, INCLUDING 8" LIME OR CEMENT STABILIZED SUBGRADE EXTENDING 1' OUTSIDE DRIVEWAY, COMPLETE IN PLACE	SY	1392	\$50.00	\$69,600.00	\$55.00	\$76,560.00	\$55.00	\$76,560.00
6.	DRAINAGE SWALE, AS SHOWN ON PLANS, COMPLETE IN PLACE	LF	703	\$8.00	\$5,624.00	\$10.00	\$7,030.00	\$10.00	\$7,030.00
7.	CONCRETE DUMPSTER PAD AND SUMP PUMP, INCLUDING 2" SCH. 40 PVC DRAIN LINE TO HEADWORKS, COMPLETE IN PLACE	LS	1	\$25,000.00	\$25,000.00	\$30,000.00	\$30,000.00	\$20,000.00	\$20,000.00
8.	4" PIPE BOLLARD, COMPLETE IN PLACE	EA	6	\$800.00	\$4,800.00	\$600.00	\$3,600.00	\$500.00	\$3,000.00
9.	8" FORCE MAIN, AWWA C900, DR-18, INCLUDING DUCTILE IRON PIPE FOR FORCE MAIN ABOVE GROUND, FITTINGS, EXCAVATION, BEDDING, BACKFILL, CONNECTION TO HEADWORKS, AND ALL APPURTENANCES, COMPLETE IN PLACE	LF	152	\$210.00	\$31,920.00	\$100.00	\$15,200.00	\$155.00	\$23,560.00
10.	24" DUCTILE IRON PIPE OUTFALL, ALL DEPTHS, INCLUDING EXCAVATION, BEDDING, AND BACKFILL, COMPLETE IN PLACE	LF	10	\$1,000.00	\$10,000.00	\$1,600.00	\$16,000.00	\$600.00	\$6,000.00
11.	24" RCP OUTFALL PIPE, ALL DEPTHS, INCLUDING EXCAVATION, BEDDING, AND BACKFILL, COMPLETE IN PLACE	LF	95	\$360.00	\$34,200.00	\$280.00	\$26,600.00	\$450.00	\$42,750.00
12.	12" DUCTILE IRON PIPE, ALL DEPTHS, INCLUDING EXCAVATION, BEDDING, AND BACKFILL, COMPLETE IN PLACE.	LF	15	\$270.00	\$4,050.00	\$900.00	\$13,500.00	\$500.00	\$7,500.00
13.	TYPE "E" INLET, INCLUDES EXCAVATION, BEDDING, AND BACKFILL, COMPLETE IN PLACE	EA	2	\$4,000.00	\$8,000.00	\$15,000.00	\$30,000.00	\$4,500.00	\$9,000.00
14.	TRENCH SAFETY SYSTEM, ALL DEPTHS, COMPLETE IN PLACE	LF	262	\$3.00	\$786.00	\$1.00	\$262.00	\$2.00	\$524.00
15.	5" CONCRETE SLOPE PAVING WITH 2' MINIMUM TOE WALLS ALL AROUND, 2' CLAY LINER BELOW ALL SLOPE PAVING, AND EXPANSION JOINTS, COMPLETE IN PLACE	SY	34	\$750.00	\$25,500.00	\$1,500.00	\$51,000.00	\$300.00	\$10,200.00
16.	CONNECT PROPOSED FORCE MAIN TO PROPOSED FORCE MAIN (BY OTHERS), INCLUDE ALL NECESSARY APPURTENANCES, ADAPTORS AND CONNECTORS, OR STUB OUT AND PLUG, COMPLETE IN PLACE	LS	1	\$2,500.00	\$2,500.00	\$5,000.00	\$5,000.00	\$500.00	\$500.00
17.	ADD 400A 480V SERVICE WITH ALL PULL BOXES, DISCONNECTS, SERVICE RACK, CONDUIT, WIRE AND DUCT BANKS AS NECESSARY. COMPLETE AND IN PLACE.	LS	1	\$90,000.00	\$90,000.00	\$75,000.00	\$75,000.00	\$130,000.00	\$130,000.00
18.	NEW 200 KW DIESEL GENERATOR WITH 72 HOUR SUB BASE FUEL TANK, UNIT MOUNTED MAIN BREAKER, 400A ATS, CONDUIT, WIRE, CONTROLS AND DUCT BANK FROM GENERATOR TO ATS. COMPLETE AND IN PLACE.	LS	1	\$252,075.00	\$252,075.00	\$250,000.00	\$250,000.00	\$200,000.00	\$200,000.00

BID TABULATION FOR:

CONSTRUCTION OF THE WILDTREE WASTEWATER TREATMENT PLANT (0.15 MGD) - PHASE 1 TO SERVE MONTGOMERY-GRIMES COUNTIES MUNICIPAL UTILITY DISTRICT NO. 146B

BID OPENING DATE:
BID OPENING LOCATION:
TABULATION BY:
TABULATION DATE:
LJA JOB NO.

MONTGOMERY-GRIMES COUNTIES MUNICIPAL UTILITY DISTRICT NO. 146E
MONTGOMERY COUNTY, TEXAS
SEPTEMBER 03, 2025
LJA ENGINEERING, INC.
F. LEMUS
SEPTEMBER 04, 2025
4021-3002 (9.2)

NO.	ITEM DESCRIPTION	UNIT	QTY	1) HCG		2) PIONEER CONSTRUCTION SERVICES, LLC		3) GILLELAND SMITH CONSTRUCTION, INC.	
				UNIT COST	TOTAL	UNIT COST	TOTAL	UNIT COST	TOTAL
19.	400A 480V PANEL WITH ALL BREAKERS, FEEDERS, 15KVA STEP DOWN TRANSFORMER, LOW VOLTAGE PANELS, CONDUIT, WIRE, CONTROLS AND DUCT BANKS AS REQUIRED. COMPLETE AND IN PLACE.	LS	1	\$90,000.00	\$90,000.00	\$70,000.00	\$70,000.00	\$40,000.00	\$40,000.00
20.	NEW NPW PANEL, CLARIFIER CONTROL PANEL, BLOWER PANEL AND MISC. SMALL PANELS WITH ALL BREAKERS, STARTERS, CONTROLS, CONDUIT, WIRE AND DUCT BANKS AS REQUIRED. COMPLETE AND IN PLACE.	LS	1	\$220,000.00	\$220,000.00	\$155,000.00	\$155,000.00	\$165,000.00	\$165,000.00
SUBTOTAL BASE BID WWTP BASE BID ITEMS					\$1,164,514.00		\$1,232,967.00		\$1,254,514.00
BASE BID MISCELLANEOUS ITEMS									
1.	STORM WATER POLLUTION PREVENTION PLAN, INCLUDING ADMINISTRATION, MAINTENANCE, AND REMOVAL AS REQUIRED BY THE PLANS AND AS DIRECTED BY THE ENGINEER, (TO BE MAINTAINED UNTIL CONTRACTOR'S NOTICE OF TERMINATION IS SUBMITTED), COMPLETE IN PLACE	LS	1	\$6,000.00	\$6,000.00	\$1,500.00	\$1,500.00	\$1,000.00	\$1,000.00
2.	FILTER FABRIC FENCE, (TO BE USED ONLY AS DIRECTED BY THE ENGINEER), COMPLETE IN PLACE	LF	1012	\$1.00	\$1,012.00	\$3.00	\$3,036.00	\$1.00	\$1,012.00
3.	INLET PROTECTION BARRIERS, (TO BE USED ONLY AS DIRECTED BY THE ENGINEER), COMPLETE IN PLACE	EA	2	\$75.00	\$150.00	\$125.00	\$250.00	\$50.00	\$100.00
4.	INSTALLATION, MAINTENANCE AND REMOVAL OF CONCRETE TRUCK WASHOUT, COMPLETE IN PLACE	LS	1	\$1,200.00	\$1,200.00	\$3,500.00	\$3,500.00	\$500.00	\$500.00
5.	INSTALLATION, MAINTENANCE AND REMOVAL OF STABILIZED CONSTRUCTION EXIT, COMPLETE IN PLACE	LS	1	\$500.00	\$500.00	\$500.00	\$500.00	\$1,500.00	\$1,500.00
6.	DEWATERING OF LINE WORK (TO BE USED ONLY AS DIRECTED BY THE ENGINEER), COMPLETE IN PLACE	LF	150	\$5.00	\$750.00	\$50.00	\$7,500.00	\$30.00	\$4,500.00
7.	CONTROL OF SURFACE WATER (TO BE USED ONLY AS DIRECTED BY THE ENGINEER), COMPLETE IN PLACE	LS	1	\$500.00	\$500.00	\$500.00	\$500.00	\$500.00	\$500.00
8.	EXTRA CEMENT STABILIZED SAND, (1.5 SACKS OF CEMENT PER CUBIC YARD CEMENT STABILIZED SAND), (TO BE USED ONLY AS DIRECTED BY THE ENGINEER), COMPLETE IN PLACE	CY	10	\$38.00	\$380.00	\$50.00	\$500.00	\$60.00	\$600.00
9.	EXTRA 4,000 PSI CONCRETE WITH REINFORCING STEEL, (TO BE USED ONLY AS DIRECTED BY THE ENGINEER), COMPLETE IN PLACE	CY	5	\$480.00	\$2,400.00	\$500.00	\$2,500.00	\$300.00	\$1,500.00
10.	EXTRA COST OF UTILITY WET SAND CONSTRUCTION, ALL LINE SIZES AND DEPTHS, (TO BE USED ONLY AS DIRECTED BY THE ENGINEER), COMPLETE IN PLACE	LF	150	\$5.00	\$750.00	\$50.00	\$7,500.00	\$30.00	\$4,500.00
11.	ALLOWANCE FOR ELECTRIC SERVICE AS DIRECTED BY ENTERGY, (TO BE USED ONLY AS DIRECTED BY THE ENGINEER). CHARGES FROM ENTERGY SHALL BE PAID BY THE CONTRACTOR. THE AMOUNTS PAID, SUPPORTED BY INVOICES, SHALL BE INCLUDED IN PAY REQUESTS FOR REIMBURSEMENT WITHOUT A GENERAL CONTRACTOR MARKUP, COMPLETE IN PLACE	LS	1	\$20,000.00	\$20,000.00	\$20,000.00	\$20,000.00	\$20,000.00	\$20,000.00
SUBTOTAL BASE BID MISCELLANEOUS ITEMS					\$33,642.00		\$47,286.00		\$35,712.00
ALTERNATE BID NO. 1: WWTP PURCHASE ALTERNATE BID NO. 1 ITEMS									
1.	PACKAGE 0.150 MGD WASTEWATER TREATMENT PLANT, INCLUDING TREATMENT UNITS, HEADWORKS, BLOWERS, CHLORINATION BUILDING AND EQUIPMENT INCLUDING CHEMICAL FEED LINE, NON-POTABLE WATER SYSTEM, ALL ASSOCIATED PIPING, ALL APPURTENANCES, AND INSTALLATION, AS SHOWN ON DRAWINGS AND PER SPECIFICATIONS, COMPLETE IN PLACE. TO BE USED IN LIEU OF WWTP BASE BID ITEM #2.	LS	1	\$2,032,215.90	\$2,032,215.90	\$2,450,000.00	\$2,450,000.00	\$1,910,000.00	\$1,910,000.00
SUBTOTAL ALTERNATE BID NO. 1: WWTP PURCHASE ALTERNATE BID NO. 1 ITEMS					\$2,032,215.90		\$2,450,000.00		\$1,910,000.00

BID TABULATION FOR:

CONSTRUCTION OF THE WILDTREE WASTEWATER TREATMENT PLANT (0.15 MGD) - PHASE 1 TO SERVE MONTGOMERY-GRIMES COUNTIES MUNICIPAL UTILITY DISTRICT NO. 146B

BID OPENING DATE:
BID OPENING LOCATION:
TABULATION BY:
TABULATION DATE:
LJA JOB NO.

MONTGOMERY-GRIMES COUNTIES MUNICIPAL UTILITY DISTRICT NO. 146E
MONTGOMERY COUNTY, TEXAS
SEPTEMBER 03, 2025
LJA ENGINEERING, INC.
F. LEMUS
SEPTEMBER 04, 2025
4021-3002 (9.2)

				1) HCG		2) PIONEER CONSTRUCTION SERVICES, LLC		3) GILLELAND SMITH CONSTRUCTION, INC.	
NO.	ITEM DESCRIPTION	UNIT	QTY	UNIT COST	TOTAL	UNIT COST	TOTAL	UNIT COST	TOTAL
ALTERNATE BID NO. 2: FENCECRETE FENCE ALTERNATE BID NO. 2 ITEM!									
	1. 8-FOOT TALL FENCECRETE FENCE INCLUDING 18-FOOT DOUBLE SWING WOOD GATE AS SHOWN ON PLANS, COMPLETE IN PLACE. TO BE USED IN LIEU OF WWTP BASE BID ITEM #4	LF	1027	\$166.75	\$171,252.25	\$172.00	\$176,644.00	\$160.00	\$164,320.00
SUBTOTAL ALTERNATE BID NO. 2: FENCECRETE FENCE ALTERNATE BID NO. 2 ITEMS					\$171,252.25		\$176,644.00		\$164,320.00
ALTERNATE BID NO. 3: ACCESS ROAD ALTERNATE BID NO. 3 ITEM!									
	1. 6" THICK CRUSHED CONCRETE ACCESS ROAD, INCLUDING 8" LIME OR CEMENT STABILIZED SUBGRADE EXTENDING 1' OUTSIDE DRIVEWAY, COMPLETE IN PLACE.	SY	3480	\$42.00	\$146,160.00	\$55.00	\$191,400.00	\$55.00	\$191,400.00
SUBTOTAL ALTERNATE BID NO. 3: ACCESS ROAD ALTERNATE BID NO. 3 ITEMS					\$146,160.00		\$191,400.00		\$191,400.00
BID SUMMARY									
BASE BID WWTP BASE BID ITEMS					\$1,164,514.00		\$1,232,967.00		\$1,254,514.00
BASE BID MISCELLANEOUS ITEMS					\$33,642.00		\$47,286.00		\$35,712.00
TOTAL AMOUNT BASE BID					\$1,198,156.00		\$1,280,253.00		\$1,290,226.00
ALTERNATE BID NO. 1: WWTP PURCHASE									
TOTAL AMOUNT BASE BID					\$1,198,156.00		\$1,280,253.00		\$1,290,226.00
DEDUCT WWTP BASE BID ITEMS ITEM NO. 2					-\$1.00		-\$110,000.00		-\$1,000.00
ALTERNATE BID NO. 1 ITEMS					\$2,032,215.90		\$2,450,000.00		\$1,910,000.00
TOTAL ALTERNATE BID NO. 1: WWTP PURCHASE PLUS BASE BID					\$3,230,370.90		\$3,620,253.00		\$3,199,226.00
ALTERNATE BID NO. 2: FENCECRETE FENCE									
TOTAL AMOUNT BASE BID					\$1,198,156.00		\$1,280,253.00		\$1,290,226.00
DEDUCT WWTP BASE BID ITEMS ITEM NO. 4					-\$55,458.00		-\$46,215.00		-\$71,890.00
ALTERNATE BID NO. 2 ITEMS					\$171,252.25		\$176,644.00		\$164,320.00
TOTAL ALTERNATE BID NO. 2: FENCECRETE FENCE PLUS BASE BID					\$1,313,950.25		\$1,410,682.00		\$1,382,656.00
ALTERNATE BID NO. 3: ACCESS ROAD									
TOTAL AMOUNT BASE BID					\$1,198,156.00		\$1,280,253.00		\$1,290,226.00
ALTERNATE BID NO. 3 ITEMS					\$146,160.00		\$191,400.00		\$191,400.00
TOTAL ALTERNATE BID NO. 3: ACCESS ROAD PLUS BASE BID					\$1,344,316.00		\$1,471,653.00		\$1,481,626.00